

**ESSEX COUNTY COUNCIL**

**PUBLIC PATH DIVERSION ORDER 2022**

**FOOTPATHS 29 & 26 LANGHAM**

**IN THE BOROUGH OF COLCHESTER**

**HIGHWAYS ACT 1980 - SECTION 119**

**PUBLIC PATH DIVERSION ORDER**

**PUBLIC PATH DIVERSION ORDER**  
**HIGHWAYS ACT 1980 – SECTION 119**  
**ESSEX COUNTY COUNCIL**  
**FOOTPATHS 29 & 26 LANGHAM**

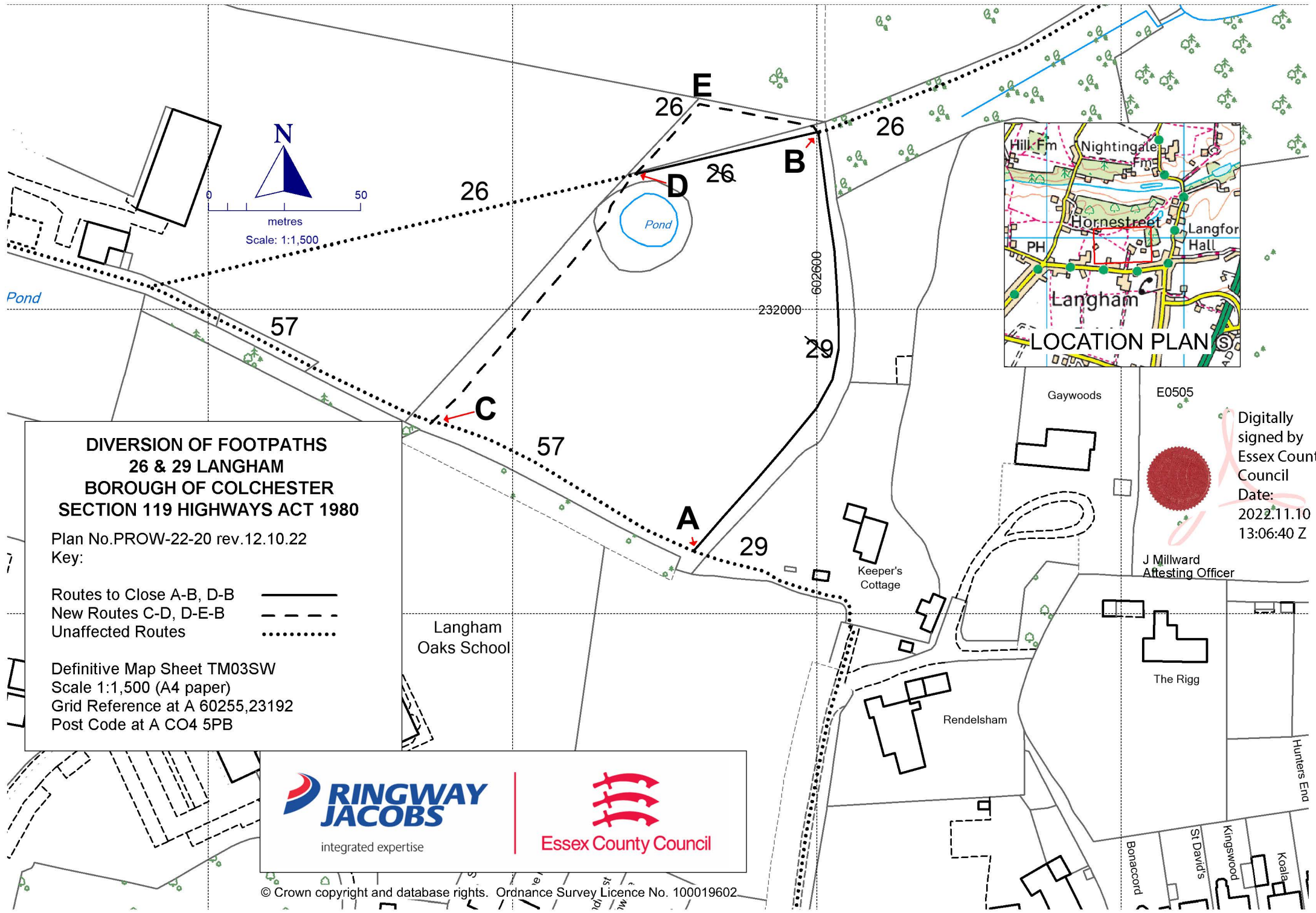
This Order is made by Essex County Council (“the authority”) under section 119 of the Highways Act 1980 (“the 1980 Act”) because it appears to the authority that in the interest of the owner of the land crossed by the footpath described in paragraph 1 of this order it is expedient that the line of the path should be diverted.

The landowner has agreed to defray any compensation which becomes payable in consequence of the coming into force of this order and any expenses incurred in the order making and bringing the new site of the path into a fit condition for use by the public.

Colchester Borough Council have been consulted.

BY THIS ORDER:

- 1) The public rights of way over the land situated north of Langham Oaks School known as Footpaths 29 and 26 Langham in the Borough of Colchester and shown by bold continuous lines on the order map numbered PROW-22-20 rev.12.10.22 contained in this order and described in Part 1 of the Schedule to this order shall be stopped up after 35 days from the date of confirmation of this order.
  
- 2) There shall at the end of 28 days from the date of confirmation of this order be public footpaths over land situated north of Langham Oaks School known as Footpaths 29 and 26 Langham in the Borough of Colchester as described in Part 2 of the Schedule and shown by bold broken lines on the order map numbered PROW-22-20 rev.12.10.22 contained in this order.



**DIVERSION OF FOOTPATHS  
26 & 29 LANGHAM  
BOROUGH OF COLCHESTER  
SECTION 119 HIGHWAYS ACT 1980**

Plan No.PROW-22-20 rev.12.10.22  
Key:

Routes to Close A-B, D-B ————  
New Routes C-D, D-E-B - - - - -  
Unaffected Routes .....  
Langham Oaks School

Definitive Map Sheet TM03SW  
Scale 1:1,500 (A4 paper)  
Grid Reference at A 60255,23192  
Post Code at A CO4 5PB

Digitally signed by Essex County Council  
Date: 2022.11.10 13:06:40 Z  
J Millward Attesting Officer

**RINGWAY JACOBS** | **Essex County Council**  
integrated expertise

## SCHEDULE

### (PART 1)

#### DESCRIPTION OF SITE OF EXISTING PATHS OR WAYS

##### Footpath 29 Langham

A part length of Footpath 29 part of unknown width and part of 2 metres width shown by a bold continuous line on the order map commencing from point **A** at grid reference 60255,23192 at the south east corner of a field running in a north easterly then generally northerly direction for a total distance of approximately 154 metres to point **B** at grid reference 60260,23205 where it connects with Footpath 26 Langham.

##### Footpath 26 Langham

A part length of Footpath 26 of unknown width shown by a bold continuous line on the order map commencing from point **D** at grid reference 60254,23204 north of a pond running in a north easterly direction across a field for a total distance of approximately 60 metres to the aforementioned point **B** where it continues unaffected.

### (PART 2)

#### DESCRIPTION OF SITE OF NEW PATHS OR WAYS

##### Footpath 29 Langham

A footpath being 2 metres in width shown by a bold broken line on the order map commencing at point **C** at grid reference 60247,23196 in the south west corner of a field running in a north easterly direction along the field edge and around a pond for a total distance of approximately 107 metres to the aforementioned point **D** where it connects to Footpath 26 Langham.

Footpath 26 Langham

A footpath being 2 metres in width shown by a bold broken line on the order map commencing at the aforementioned point **D** running in a north easterly direction along the field edge for a distance of approximately 30 metres to point **E** at grid reference 60256,23206 where it continues in an east south easterly direction around the field edge adjacent to a wooded area for a final distance of approximately 41 metres to the aforementioned point **B** where it continues unaffected.

The COMMON SEAL of the ESSEX COUNTY COUNCIL was hereunto affixed on the Tenth day of November 2022

E0505

In the presence of  
Jacqueline Millward  
Attesting Officer



Digitally  
signed by  
Essex  
County  
Council  
Date:  
2022.11.10<sup>®</sup>  
13:09:01 Z

Dated: 10<sup>th</sup> day of November 2022

**PUBLIC PATH DIVERSION ORDER**

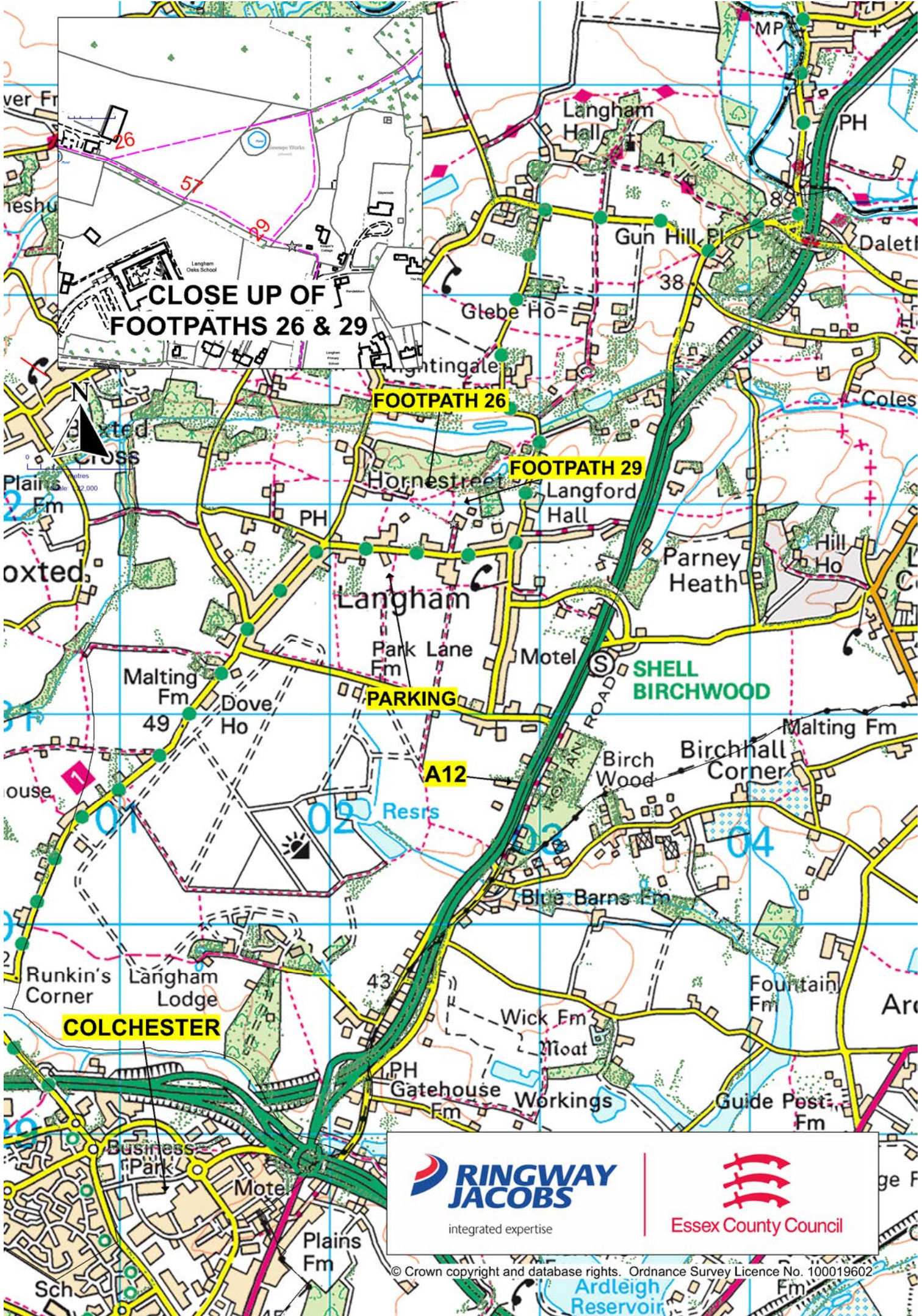
**HIGHWAYS ACT 1980  
SECTION 119**

Footpaths 29 & 26 in Langham in the  
Borough of Colchester

Paul Turner  
Director, Legal and Assurance

Seax House  
Victoria Road South  
Chelmsford  
Essex  
CM1 1QH

**CLOSE UP OF FOOTPATHS 26 & 29**



 <b>RINGWAY JACOBS</b> integrated expertise	 <b>Essex County Council</b>
---	---