

Public notice

**NOTICE OF MAKING OF AN ORDER
HIGHWAYS ACT 1980
ESSEX COUNTY COUNCIL
PUBLIC PATH DIVERSION ORDER 2022
FOOTPATHS 14 & 15 SOUTH HANNINGFIELD**

The above order, made on 2 February 2022 under section 119 of the Highways Act 1980, as shown on the order maps will divert:

Footpath 14 South Hanningfield

A part length of Footpath 14 South Hanningfield being 2m in width shown by a bold continuous line on the order map commencing from the point where it leaves the field edge 82 metres north of De-Beauvoir Chase running in a north westerly direction across a field for a total distance of 292 metres to a point at the field edge in the north western corner of the field, to an alternative route 2 metres in width shown by a bold broken line on the order map commencing from the aforementioned start point running in a north north westerly direction around the field edge for a distance of 153 metres to a point in the north eastern corner of the field where it continues in a west south westerly direction around the field edge for a final distance of 231 metres to the aforementioned end point where it continues unaffected.

Footpath 15 South Hanningfield

A part length of Footpath 15 South Hanningfield of unknown width shown by a bold continuous line on the order map commencing from the point where it meets De-Beauvoir Chase running in a south westerly direction across a field for a total distance of 344 metres to a point at the field edge in the south west corner of the field, to an alternative route 2 metres in width shown by a bold broken line on the order map commencing from the aforementioned start point running in a south south easterly direction around the field edge for a distance of 6 metres to a point at the field edge continuing in the same direction around the field edge for a further distance of 166 metres to a point at the south east corner of the field. The path then continues in a west south westerly direction around the field edge for a final distance of 303 metres to the aforementioned end point where it continues unaffected.

Copies of the order and order map can be requested to be posted or viewed by emailing publicpathorders@essexhighways.org to arrange a suitable time to inspect the documents quoting the Order title. Documents can be made available for inspection 8.30am-4.30pm Mon-Fri at Essex County Council, County Hall, E block main reception, Market Road, Chelmsford if so required following the current social distancing restrictions. Copies of the order and order map are available on Essex Highways website at:

<https://www.essexhighways.org/transport-and-roads/getting-around/public-rights-of-way/public-path-notices.aspx> and have also been sent to Chelmsford City Council and South Hanningfield Parish Council.

CONTINUED



Legal notice to the public

Public notice

Any representations about or objections to the order may be sent in writing to Robert Lee, Definitive Map Service, Essex County Council, Seax House, 2nd Floor, Victoria Road South, Chelmsford CM1 1QH not later than 17 March 2022 Please state the grounds on which they are made.




If no such representations or objections are duly made, or if any so made are withdrawn, Essex County Council may confirm the Order as an unopposed order. If the Order is sent to the Secretary of State for the Environment for confirmation any representations or objections which have not been withdrawn will be sent together with the Order. Any such representation or objections will be taken into account by the Council with the result that they may be made available to the public under the Local Government (Access to Information) Act 1985.

Dated 17 February 2022

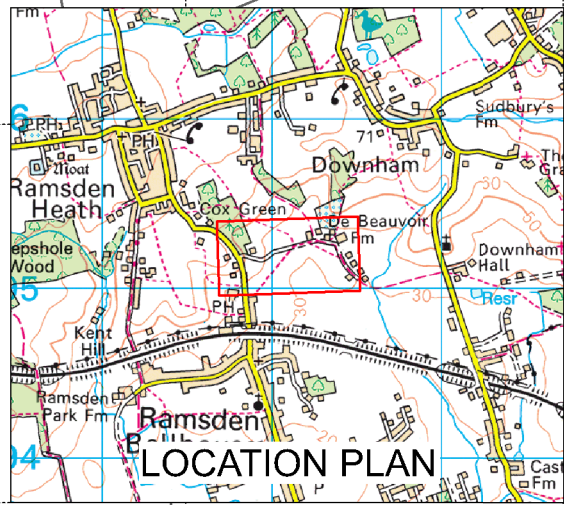
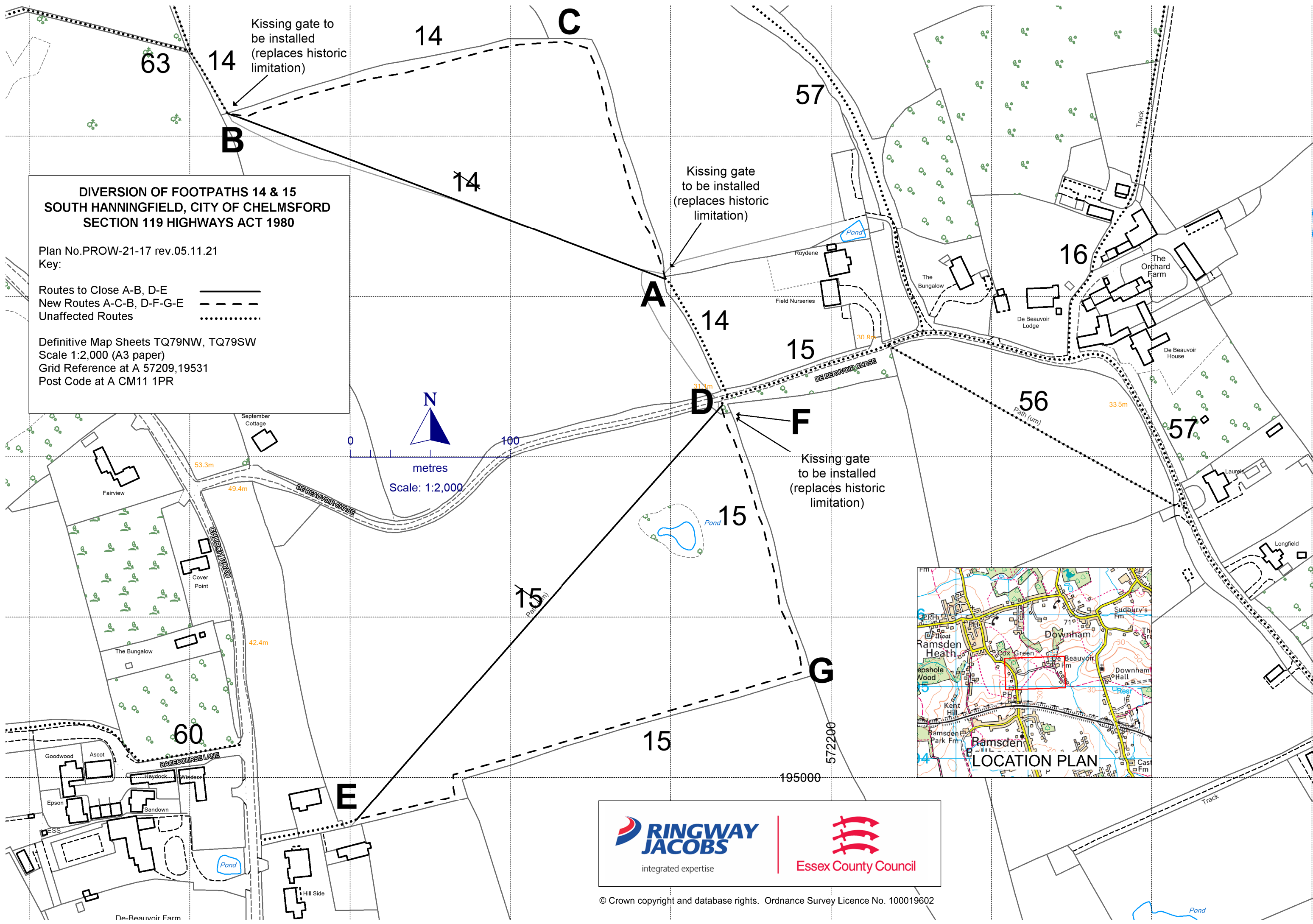


**DIVERSION OF FOOTPATHS 14 & 15
SOUTH HANNINGFIELD, CITY OF CHELMSFORD
SECTION 119 HIGHWAYS ACT 1980**

Plan No. PROW-21-17 rev.05.11.21
Key:

Routes to Close A-B, D-E 
New Routes A-C-B, D-F-G-E 
Unaffected Routes 

Definitive Map Sheets TQ79NW, TQ79SW
Scale 1:2,000 (A3 paper)
Grid Reference at A 57209, 19531
Post Code at A CM11 1PR



RINGWAY JACOBS
integrated expertise

Essex County Council

© Crown copyright and database rights. Ordnance Survey Licence No. 100019602

FISH4JOBS
phone 0333 321 2602

Provide
Calvern Care
Excellence in Home Care Provision

Reference Number 828-PROVIDE1435-G

**Care Practitioner -
Calvern Care Ltd
Domiciliary Care Service**

Would you like to start a new career delivering care and support to those vulnerable in your community?

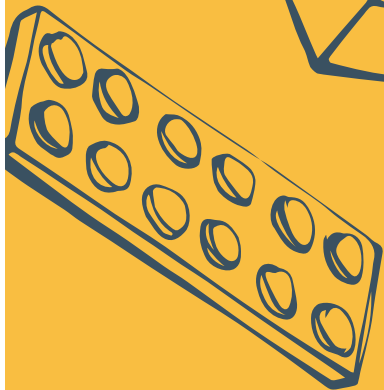
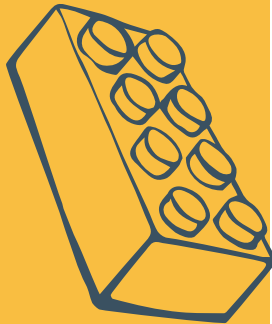
We are looking to recruit a number of Care Practitioners to expand the capacity within our existing team, broaden our geography and work closely with the community health and social care services.

Calvern Care Limited is a well-established domiciliary care provider delivering care to a wide variety of service users (dementia, complex care, physical disabilities etc.) within the Chelmsford area.

Our aim is to provide the highest standard of personal support for people living in the community who, through illness, frailty or disability are unable to provide this independently for themselves.

For further information please contact
Carol martin Registered manager on
01245 356 755 or carol@calverncare.co.uk

Any item any price free online



The best place
to **sell** your
brick-a-brack

marketplacelive.co.uk
Your local place to buy and sell

Public Notices

Public Notices

Essex County Council

Notice Of Making of An Order Highways Act 1980 Public Path Diversion Order 2022 Footpaths 14 & 15 South Hanningfield

The above order, made on 2 February 2022 under section 119 of the Highways Act 1980, as shown on the order maps will divert:

Footpath 14 South Hanningfield

A part length of Footpath 14 South Hanningfield being 2m in width shown by a bold continuous line on the order map commencing from the point where it leaves the field edge 82 metres north of De-Beauvoir Chase running in a north westerly direction across a field for a total distance of 292 metres to a point at the field edge in the north western corner of the field, to an alternative route 2 metres in width shown by a bold broken line on the order map commencing from the aforementioned start point running in a north north westerly direction around the field edge for a distance of 153 metres to a point in the north eastern corner of the field where it continues in a west south westerly direction around the field edge for a final distance of 231 metres to the aforementioned end point where it continues unaffected.

Footpath 15 South Hanningfield

A part length of Footpath 15 South Hanningfield of unknown width shown by a bold continuous line on the order map commencing from the point where it meets De-Beauvoir Chase running in a south westerly direction across a field for a total distance of 344 metres to a point at the field edge in the south west corner of the field, to an alternative route 2 metres in width shown by a bold broken line on the order map commencing from the aforementioned start point running in a south south easterly direction around the field edge for a distance of 6 metres to a point at the field edge continuing in the same direction around the field edge for a further distance of 166 metres to a point at the south east corner of the field. The path then continues in a west south westerly direction around the field edge for a final distance of 303 metres to the aforementioned end point where it continues unaffected.

Copies of the order and order map can be requested to be posted or viewed by emailing publicpathorders@essexhighways.org to arrange a suitable time to inspect the documents quoting the Order title. Documents can be made available for inspection 8.30am-4.30pm Mon-Fri at Essex County Council, County Hall, E block main reception, Market Road, Chelmsford if so required following the current social distancing restrictions. Copies of the order and order map are available on Essex Highways website at: <https://www.essexhighways.org/transport-and-roads/getting-around/public-rights-of-way/public-path-notices.aspx> and have also been sent to Chelmsford City Council and South Hanningfield Parish Council.

Any representations about or objections to the order may be sent in writing to Robert Lee, Definitive Map Service, Essex County Council, Seax House, 2nd Floor, Victoria Road South, Chelmsford CM1 1QH not later than 17 March 2022 Please state the grounds on which they are made.

If no such representations or objections are duly made, or if any so made are withdrawn, Essex County Council may confirm the Order as an unopposed order. If the Order is sent to the Secretary of State for the Environment for confirmation any representations or objections which have not been withdrawn will be sent together with the Order. Any such representation or objections will be taken into account by the Council with the result that they may be made available to the public under the Local Government (Access to Information) Act 1985.

(Chelmsford City) (Prohibition of Waiting, Loading and Stopping) and (On-Street Parking Places) (Civil Enforcement Area) (Amendment No.15) Order 202*

Notice is hereby given that Essex County Council proposes to make the above Order under Sections 1(1), 2(1) to (3), 3(2), 4(1), 4(2), 32(1), 35(1), 45, 46, 49 and 53 and Part IV of Schedule 9 of the Road Traffic Regulation Act 1984.

The effect of the Orders:

- To introduce 'Permit Holders only area Zone 21 except in signed bays' restrictions on the following roads, Broomfield in the City of Chelmsford:

Location	Extent
Searle Crescent, Broomfield	BOTH SIDES: From a point approximately 6 metres from its junctions with Hospital Approach for its entire length excluding the private drive fronting property No's 1 to 9.
Hedgecock Link, Broomfield	BOTH SIDES: From its junction with Searle Crescent, for its entire length excluding the private drive fronting property No's 1 to 5.
Little Dumplings, Broomfield	BOTH SIDES: From its junction with Searle Crescent for its entire length to its junction with Petty Croft.
Petty Croft, Broomfield	BOTH SIDES: From its junctions with Searle Crescent and Little Dumplings for its entire length excluding the private drives fronting property No's 81 to 87 & 89 to 95.

- To introduce a parking place reserved for loading and unloading on the west side of Searle Crescent (western junction), Broomfield in the City of Chelmsford, from a point approximately 20 metres north from its junction with Hospital Approach in a northerly direction for an approximate distance of 24 metres.

All residential properties of Searle Crescent, Hedgecock Link, Little Dumplings and Petty Croft inclusive of those with private drives will be eligible to apply for a permit. Details relating to permits and visitor tickets including costs can be found: <https://www.chelmsford.gov.uk/parking-and-travel/resident-parking/chelmsford-resident-permit-scheme/>

This Order will be incorporated into The Essex County Council (Chelmsford City) (Prohibition of Waiting, Loading and Stopping) and (On-Street Parking Places) (Civil Enforcement Area) Consolidation Order 2019 by substituting tile numbers TL700 112, TL705 112, TL705 115 revision 0 to revision 1.

Further details: All associated documents for the proposed scheme are available on the Essex Highways website: <http://www.essexhighways.org/Transport-and-Roads/Highway-Schemes-and-Developments/Traffic-Regulation-Orders.aspx>

If you need to view a hard copy of these documents, please call 07786 125874 to arrange a suitable time to inspect the documents quoting the below reference number. Documents can be made available for inspection 8.30am-5.30pm Mon-Thurs and 8.30am-5pm on Friday at Essex County Council, County Hall E block main reception, Market Road, Chelmsford. Alternatively, documents can be posted to you upon request.

Objections: Anyone who wishes to object to the proposed scheme should send the grounds for their objection via e-mail to TrafficRegulation.Order@essexhighways.org quoting reference TRAF/7137, by the 11 March 2022.

(Hyde Lane, Danbury) (Temporary Prohibition of Traffic) Order 2022

Notice is hereby given that the Essex County Council intends, not less than seven days from the date of this notice, to make the above Order under section 14(1) of the Road Traffic Regulation Act 1984.

Effect of the order: To temporarily close that length of Hyde Lane, Danbury in the City of Chelmsford, from its junction with Capons Lane to its junction with Southwood Chase a distance of approximately 325m. The closure is scheduled to commence on 7th March 2022 for 15 days, or where stated on a valid permit

(BC333BC006JHGJN0614602 – Openreach). The scheduled dates may vary for these works with appropriate signs showing and/or displayed on one.network. The closure is required for the safety of the public and workforce while new connection works are undertaken by Openreach.

An alternative route is available via Hyde Lane, Tyndales Lane, Maldon Road and vice versa.

The Order will come into effect on 24th February 2022 and may continue in force for 18 months or until the works have been completed, whichever is the earlier.

(Old Barn Lane, Rettendon) (Temporary Prohibition of Traffic) Order 2022

Notice is hereby given that the Essex County Council intends, not less than seven days from the date of this notice, to make the above Order under section 14(1) of the Road Traffic Regulation Act 1984.

Effect of the order: To temporarily close that length of Old Barn Lane, Rettendon in the City of Chelmsford, from its junction with South Hanningfield Road to its junction with Tileworks Lane a distance of approximately 410m. The closure is scheduled to commence on 9th March 2022 for 22 days, or where stated on a valid permit (YF088YF7245251 – Interoute). The scheduled dates may vary for these works with appropriate signs showing and/or displayed on one.network. The closure is required for the safety of the public and workforce while duct installation works are undertaken by Interoute.

No diversion route available.

The Order will come into effect on 24th February 2022 and may continue in force for 18 months or until the works have been completed, whichever is the earlier.

(Ridley Road, Broomfield) (Temporary Prohibition of Traffic) Order 2022

Notice is hereby given that the Essex County Council intends, not less than seven days from the date of this notice, to make the above Order under section 14(1) of the Road Traffic Regulation Act 1984.

Effect of the order: To temporarily close that length of Ridley Road, Broomfield in the City of Chelmsford, from a point approximately 125m east then north east of its junction with Days Close for a distance of approximately 20m in a northerly direction. The closure is scheduled to commence on 8th March 2022 for 1 day, or where stated on a valid permit (EC30052822011 – UK Power Networks). The scheduled dates may vary for these works with appropriate signs showing and/or displayed on one.network. The closure is required for the safety of the public and workforce while new connection works are undertaken by UK Power Networks.

No alternative route is available.

The Order will come into effect on 24th February 2022 and may continue in force for 18 months or until the works have been completed, whichever is the earlier.

(The Street, Galleywood) (Temporary Prohibition of Traffic) Order 2022

Notice is hereby given that the Essex County Council intends, not less than seven days from the date of this notice, to make the above Order under section 14(1) of the Road Traffic Regulation Act 1984.

Effect of the order: To temporarily close that length of The Street, Galleywood in the City of Chelmsford, from a point approximately 50m south east of its junction with Watchouse Road for a distance of approximately 20m in a south easterly direction. The closure is scheduled to commence on 7th March 2022 for 5 days, or where stated on a valid permit (EC30004596792 – UK Power Networks). The scheduled dates may vary for these works with appropriate signs showing and/or displayed on one.network. The closure is required for the safety of the public and workforce while new connection works are undertaken by UK Power Networks.

An alternative route is available via Ponds Road, The Street, Stock Road, Watchouse Road and vice versa.

The Order will come into effect on 24th February 2022 and may continue in force for 18 months or until the works have been completed, whichever is the earlier.

(Cherwell Drive, Chelmsford) (Temporary Prohibition of Traffic) Order 2022

Notice is hereby given that the Essex County Council has made the above Order under section 14(1) of the Road Traffic Regulation Act 1984.

Effect of the order: To temporarily close that length of Cherwell Drive, Chelmsford in the City of Chelmsford, from its junction with Trent Road to its junction with Welland Avenue a distance of approximately 165m. The closure is scheduled to commence on 21st February 2022 for 40 days, or where stated on a valid permit (EP201EH2317655 – Essex County Council). The scheduled dates may vary for these works with appropriate signs showing and/or displayed on one.network. The closure is required for the safety of the public and workforce while grasscrete installation works are undertaken by Essex County Council.

An alternative route is available via Trent Road, Chignal Road, Avon Road, Welland Avenue and vice versa.

The Order came into effect on 10th February 2022 and may continue in force for 18 months or until the works have been completed, whichever is the earlier.

(Clyde Crescent, Chelmsford) (Temporary Prohibition of Traffic & Temporary Introduction of a Clearway) Order 2022

Notice is hereby given that the Essex County Council has made the above Order under section 14(1) of the Road Traffic Regulation Act 1984.

Effect of the order:

- To temporarily close that length of Clyde Crescent, Chelmsford in the City of Chelmsford, from its junction with Thames Avenue to its other junction with Thames Avenue a distance of approximately 335m.
- To temporarily introduce a 'No Waiting, No Loading and No Stopping' in that length of Clyde Crescent, Chelmsford in the City of Chelmsford, from its junction with Thames Avenue to its other junction with Thames Avenue a distance of approximately 335m.

"The Essex County Council (Chelmsford City) (Prohibition of Waiting, Loading and Stopping) and (On Street Parking Places) (Civil Enforcement Area) Consolidation Order 2019" will be temporarily amended to include the temporary 'No Waiting, No Loading and No Stopping at Any Time' restriction and suspend any existing parking and waiting restrictions on the above length of road only. All other restrictions and exemptions contained in the aforementioned Order and Amendments to that Order shall remain in force.

The restrictions are scheduled to commence on 21st February 2022 for 33 days, or where stated on a valid permit (EP201EH2323696 – Essex County Council). The scheduled dates may vary for these works with appropriate signs showing and/or displayed on one.network. The restrictions are required for the safety of the public and workforce while installation of parking bays works are undertaken by Essex County Council.

An alternative route is available via Thames Avenue and vice versa.

The Order came into effect on 10th February 2022 and may continue in force for 18 months or until the works have been completed, whichever is the earlier.

NOTICE TO CREDITORS TO SUBMIT CLAIMS (Will Trust)

Re the Trusts of the Will of Mary Elizabeth Lochhead - re Rosamond Mary Ford died 20th January 2022

Pursuant to the Trustee Act 1925, Section 27 NOTICE IS HEREBY GIVEN that any person having a claim against or an interest in the property subject to the trusts of the above-mentioned instrument whereof Apex Corporate Trustees (UK) Limited, 6th Floor, 140 London Wall, London EC2Y 5DN are the present Trustees is hereby required to send the particulars in writing of his claim or interest to the said Trustees on or before 19th April 2022 after which date the said Trustees will proceed to distribute the Trust property and make any consequential conveyances of any part thereof amongst the persons entitled thereto having regard only to the claims and interests of which the said Trustees shall then have had notice.

JEREMY PAUL RAYNER Deceased

Pursuant to the Trustee Act 1925 anyone having a claim against or an interest in the Estate of the deceased, late of Moulsham House, 116-117 Moulsham Street, Chelmsford, CM2 0JN, who died on 18/09/2021, must send written particulars to the address below by 19/04/2022, after which date the Estate will be distributed having regard only to claims and interests notified.

Hugh James Solicitors

Two Central Square, Cardiff, CF10 1FS
Ref:VWIL/ERV/RAY0178/00001



Any item
any price
free online

marketplacelive.co.uk
Your local place to buy and sell