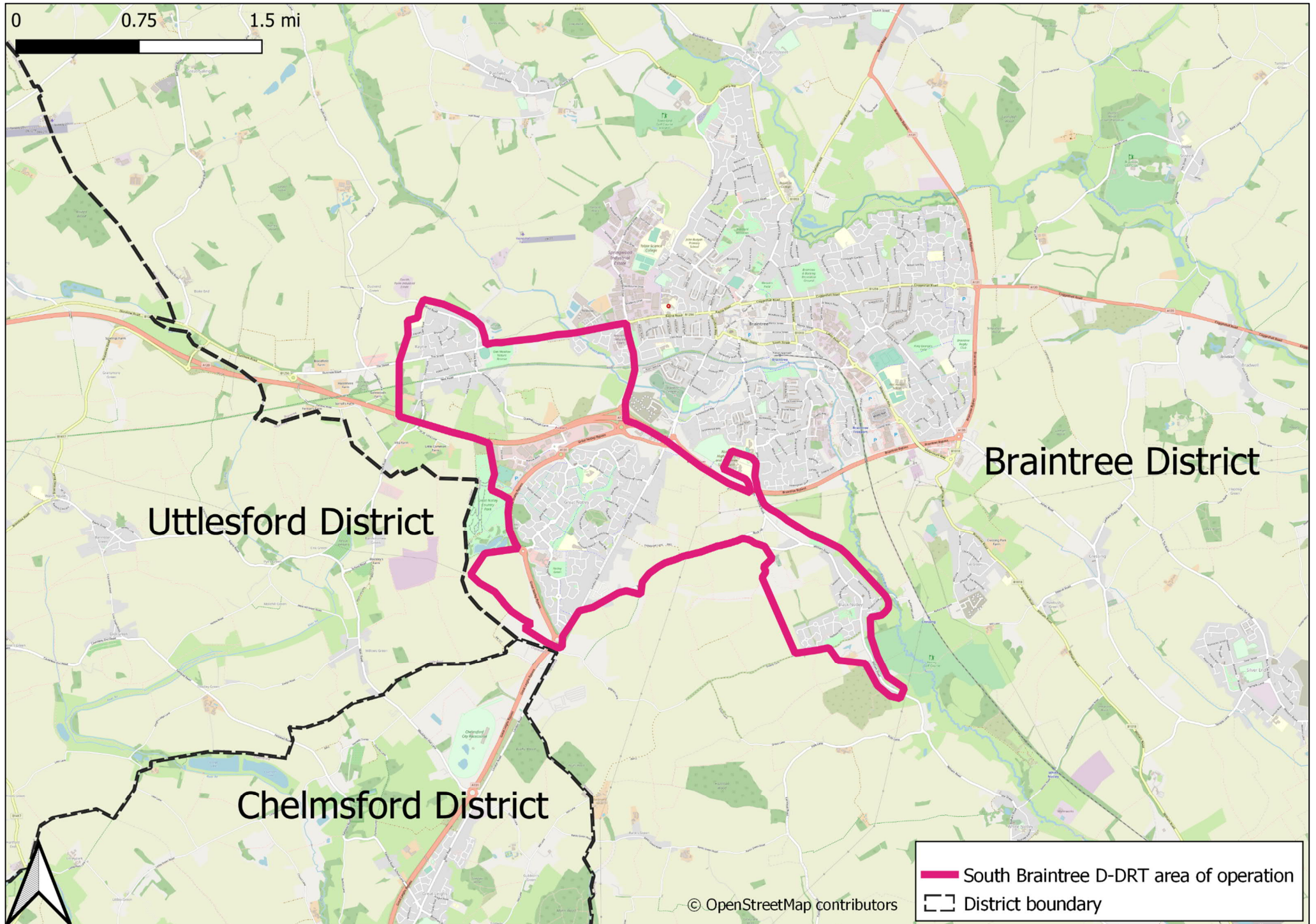
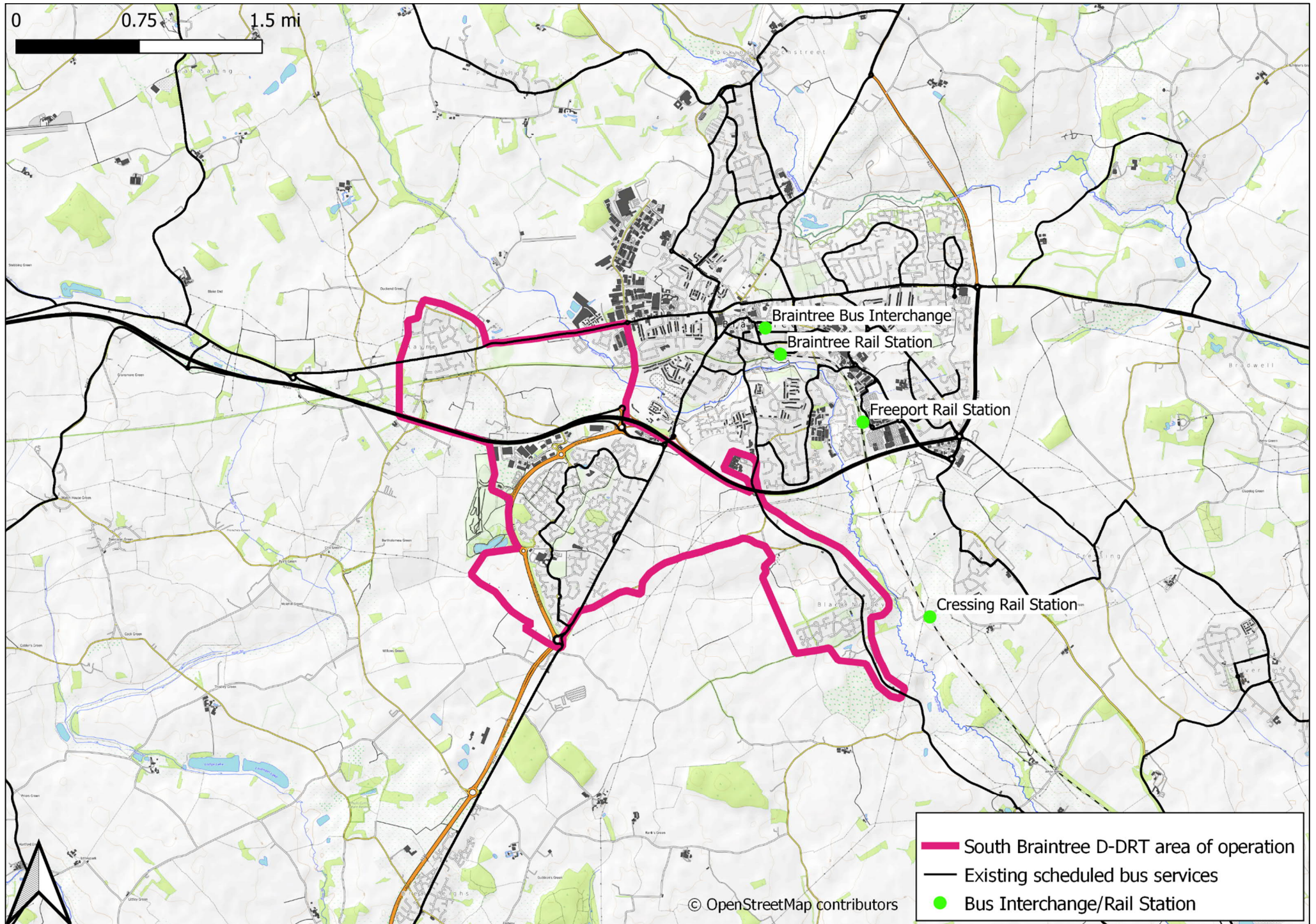


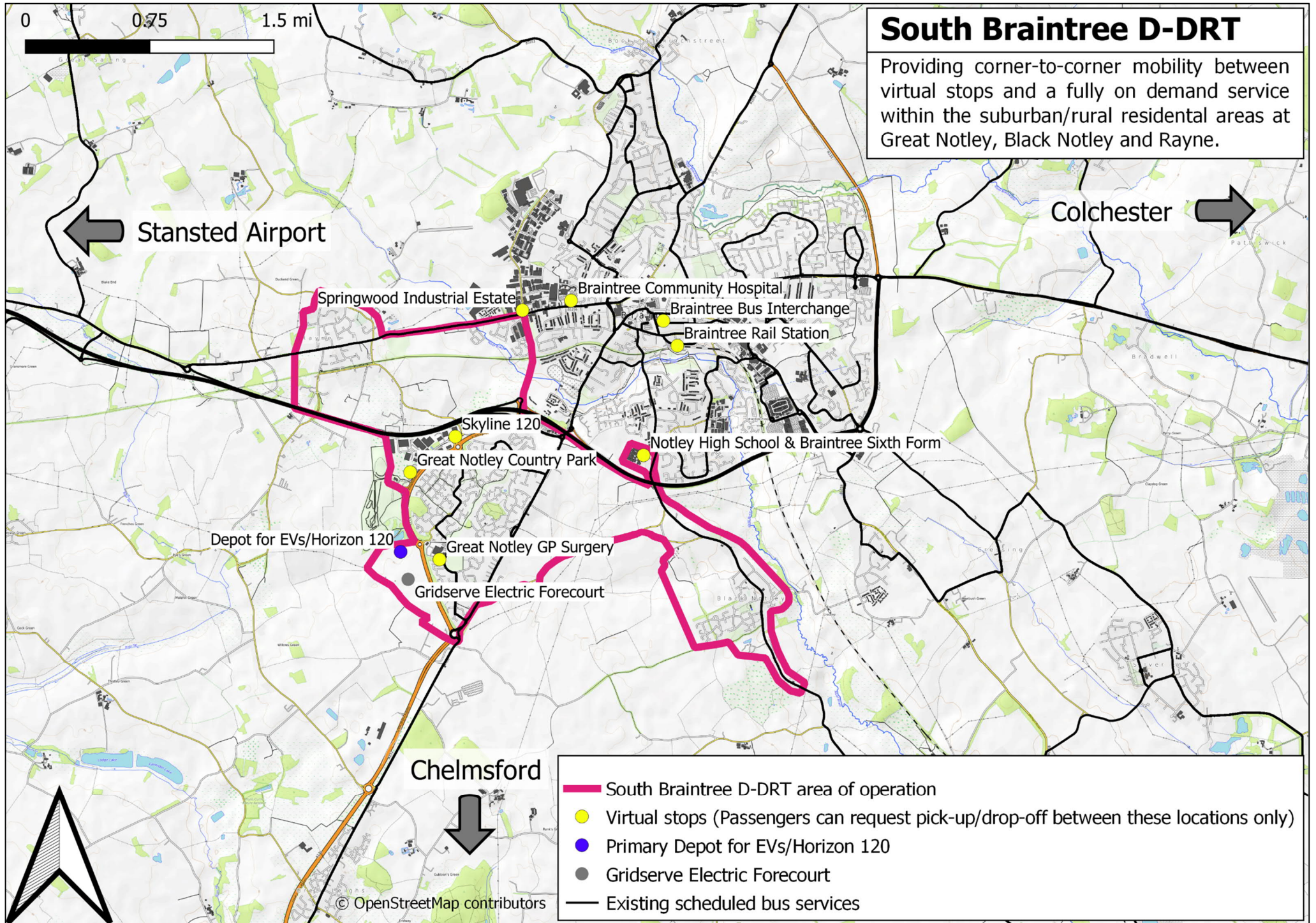
Annex 1.1: South Braintree D-DRT location



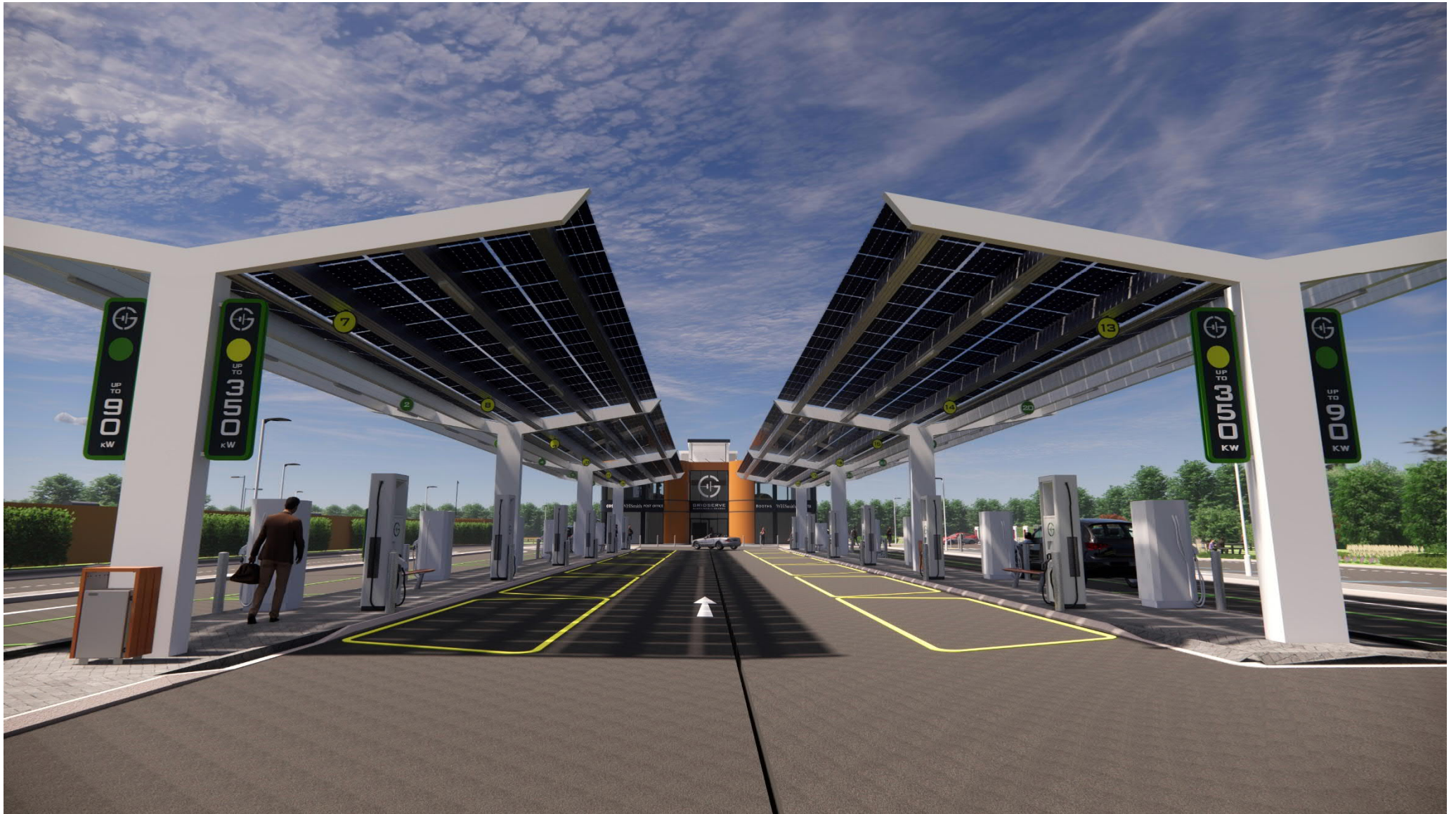
## Annex 2.2: Overview of existing public transport provision (Pre-Covid19)



## Annex 3.2: Proposed Solution



Annex 4.3: GRIDSERVE Electric Forecourt in Braintree (under construction)



**Annex 4.3 (continued): GRIDSERVE Electric Forecourt in Braintree (under construction)**



## **Annex 5: Letters of Support**

1. Braintree District Council
2. GRIDSERVE
3. Great Notley Parish Council
4. Rayne Parish Council
5. Rural Community Council of Essex (RCCE)
6. Community Agents Essex
7. AVL
8. Marshgate Developments Ltd
9. PG Bones Ltd
10. AM Safety Specialists Ltd
11. Compliance Labelling Solutions Ltd