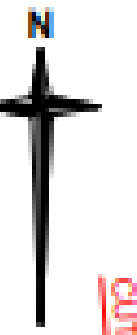


Phase Plan 1 - Sections 10-12



Section 12 - 0.3 shift closure - plane & recon area

Section 12 - 0.3 shift closure - plane & recon area

Section 10 - 1 week parking suspension

Section 11 - 3 shifts lane closure - overlay footways

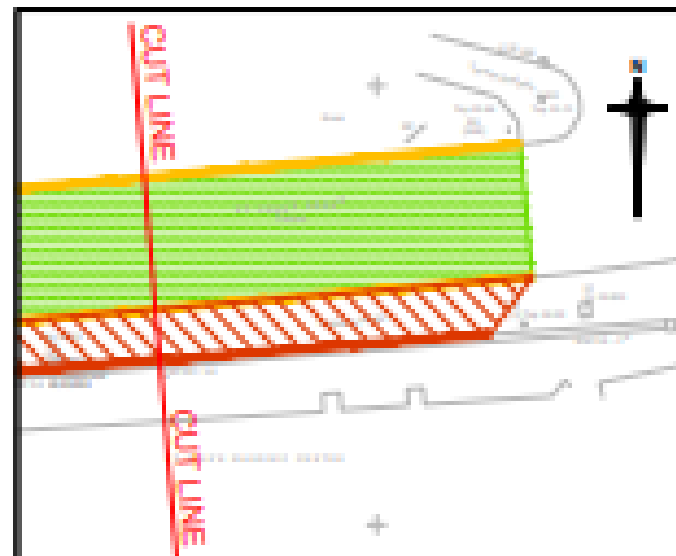
Section 11 - 3 shifts lane closure - overlay footways

Section 12 - 0.3 shift closure - plane & recon area

Section 11 - 0.3 shift closure - plane inlay & recon area

- Notes**
1. Do not scale.
 2. Refer also to other contract drawings.
 3. Given the uncertain nature of the sub-formation allowance should be made for areas of "soft spots". Details of this construction can be found on Drawing Number E08-017A-007-00-006.
 4. Apparatus requiring (DND) electrical services, removed under site clearance, are to be transferred by UKPN.
 5. Where new construction / overlay abuts existing construction the surface course and binder course are to join in 300mm steps.
 6. For details of all construction materials see Drawing Number E08-017A-007-00-006.
 7. Granite set channels to be laid 300mm wide, where necessary.

- Key**
- Reconstruct carriageway 500mm deep, to existing levels. Relay drainage channels utilising the granite sets (not channel blocks) removed under site clearance. For details see Drawing Number E08-017A-007-00-004 - approx 380m²
 - Overlay carriageway adjacent to southern channel (CH), see Drawing number E08-017A-007-00-001 by 100mm and also to new channels levels along CH, opposite - approx 910m², average depth approx 200mm.
 - Overlay carriageway with 120mm bituminous material (regulating, binder, surface course) - 310m²
 - Overlay carriageway with 100mm bituminous material (binder / surface courses) - approx 2120m²
 - Reconstruct carriageway 500mm deep, to be in with new adjacent overlay levels - approx 650m²
 - Overlay footway to suit new edging / kerb levels - approx 380m² @ 100mm average depth.
 - 40mm plane & inlay of carriageway surface course - approx 310m²
 - New footway construction, for details see Drawing Number E08-017A-007-00-006 - approx 60m²
 - Existing kerbs to remain.
 - Existing kerbs to remain, granite set channel (approx 60m) to be re-laid as part of the carriageway reconstruction / overlay.
 - Provide new H82 kerbs. Kerb levels to be raised by 100mm above the existing carriageway level. The first 15m (from the eastern end) to serve as transition between existing levels and new - approx 120m.
 - Provide new edging Type 6F200 with 120mm upstand (from existing carriageway level) - approx 70m.
 - Kerbs to be laid utilising re-used sandstone kerbs (removed under site clearance), where possible. If insufficient re-cycled kerbs are available then Marshall's Sustronor diamond wire steel Yorkshire kerbs are to be provided. Granite set channel to be re-laid as part of the carriageway reconstruction / overlay - approx 230m.
 - Provide new 255 x 120mm conservation kerbs to new levels - approx 110m.
 - Rear of footway to be raised to provide 140 unobstructed towards the carriageway. New 6F 100 edging to be provided where necessary - approx 180m.
 - 100 x 100 x 100mm treated timber posts, approx 800mm high at 1.5m centres to be provided along with a 300 x 300 x 300 concrete foundation, concrete mix S71. Posts to be installed 750mm back from the edge of carriageway - 75 No.



No.	Date	Description of Issue	Drawn	Checked	Issued	Approved
B	02/21	Kerb and notes amended, regarding granite sets.	NF	VV	NF	SJW
A	01/21	Footway overlay area amended.	NF	VV	NF	SJW

FOR TENDER



Essex Highways, Sales House, Victoria Road South, Chelmsford, CM1 1QH. Tel: 02045 623161

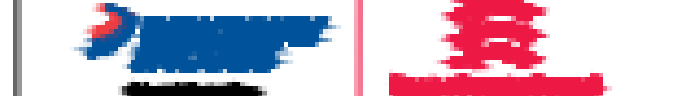
© Essex County Council
Carriageway and Footway Improvements St Johns Green, Colchester

General Arrangement

DATE	ISSUED	DATE	ISSUED	DATE	ISSUED
NF	NF	VV	NF	SJW	
Jun 20	Jun 20	Dec 20	Dec 20	Dec 20	

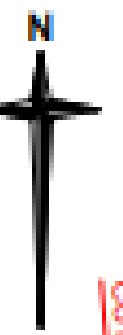
DIMENSIONS IN MILLIMETRES
LEVELS IN METRES

Scale: 1:250
Drawing No: E08-017A-007-00-003



This map is reproduced from Ordnance Survey material with the permission of Ordnance Survey on behalf of the Controller of Her Majesty's Stationery Office (Crown Copyright). Unauthorised reproduction may be subject to criminal proceedings under the Copyright, Designs and Patents Act 1988.

Phase Plan 1 - Sections 13-15



Section 13 - 3 days closure - recon

Section 14 - 1 week parking suspension - recon

Section 15 - 2 weeks closure - recon

Section 13 - 2 days closure - recon

- Notes**
1. Do not scale.
 2. Refer also to other contract drawings.
 3. Given the uncertain nature of the sub-formation allowance should be made for areas of 'soft spots'. Details of this construction can be found on Drawing Number E08-017A-007-00-006.
 4. Apparatus requiring (DND) electrical services, removed under site clearance, are to be transferred by UKPN.
 5. Where new construction / overlay abuts existing construction the surface course and binder course are to join in 300mm steps.
 6. For details of all construction materials see Drawing Number E08-017A-007-00-006.
 7. Granite set channels to be laid 300mm wide, where necessary.

- Key**
- Reconstruct carriageway 500mm deep, to existing levels. Relay drainage channels utilising the granite sets (not channel blocks) removed under site clearance. For details see Drawing Number E08-017A-007-00-004 - approx 380m²
 - Overlay carriageway adjacent to southern channel (CH), see Drawing number E08-017A-007-00-001 by 100mm and also to new channels levels along CH, opposite - approx 910m², average depth approx 200mm.
 - Overlay carriageway with 120mm bituminous material (regulating, binder, surface course) - 310m²
 - Overlay carriageway with 100mm bituminous material (binder / surface courses) - approx 2120m²
 - Reconstruct carriageway 500mm deep, to be in with new adjacent overlay levels - approx 650m²
 - Overlay footway to suit new edging / kerb levels - approx 380m² @ 100mm average depth.
 - 40mm plate & inlay of carriageway surface course - approx 310m²
 - New footway construction, for details see Drawing Number E08-017A-007-00-006 - approx 60m²
 - Existing kerbs to remain.
 - Existing kerbs to remain, granite set channel (approx 60m) to be re-laid as part of the carriageway reconstruction / overlay.
 - Provide new H20 kerbs. Kerb levels to be raised by 100mm above the existing carriageway level. The first 15m (from the eastern end) to serve as transition between existing levels and new - approx 120m.
 - Provide new edging Type 6F250 with 120mm upstand (from existing carriageway level) - approx 70m.
 - Kerbs to be laid utilising re-used sandstone kerbs (removed under site clearance), where possible. If insufficient re-cycled kerbs are available then Marshalls Southcoast diamond wire steel Yorkshire kerbs are to be provided. Granite set channel to be re-laid as part of the carriageway reconstruction / overlay - approx 230m.
 - Provide new 255 x 120mm conservation kerbs to new levels - approx 110m.
 - Rear of footway to be raised to provide 140 upstand towards the carriageway. New 6F 150 edging to be provided where necessary - approx 180m.
 - 100 x 100 x 100mm treated timber posts, approx 800mm high at 1.5m centres to be provided along with a 300 x 300 x 300 concrete foundation, concrete mix S71. Posts to be installed 750mm back from the edge of carriageway - 75 No.



No.	Date	Description of Issue	Drawn	Checked	Issued	Approved
B	02/21	Kerb and notes amended, regarding granite sets.	NF	VV	NF	SJW
A	01/21	Footway overlay area amended.	NF	VV	NF	SJW

FOR TENDER



Essex Highways, Sales House, Victoria Road South, Chelmsford, CM1 1QH. Tel: 02045 6237631 © Essex County Council

Carriageway and Footway Improvements St Johns Green, Colchester

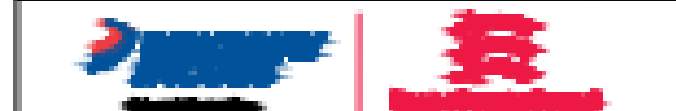
General Arrangement

DATE	ISSUED	BY	DATE	BY	DATE
Jun 20	Jun 20	Dec 20	Dec 20	Dec 20	Dec 20

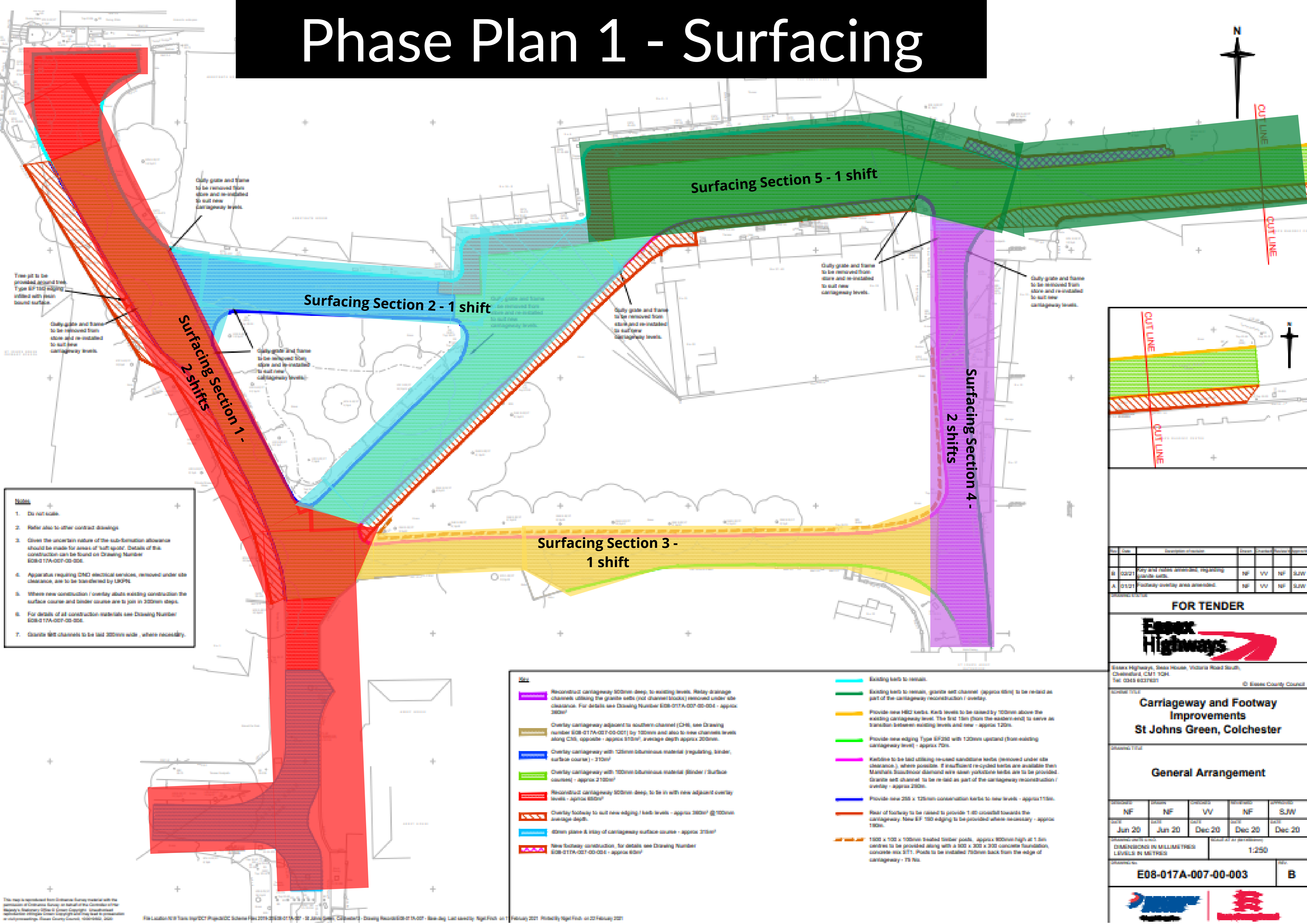
DIMENSIONS IN MILLIMETRES
LEVELS IN METRES

E08-017A-007-00-003

B

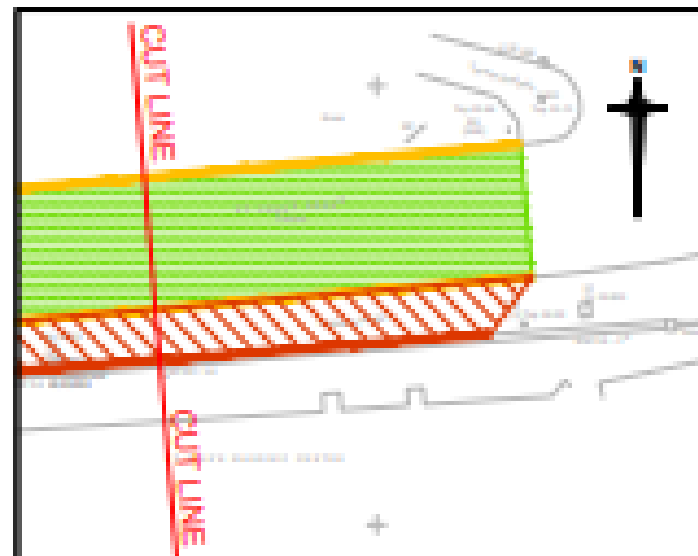


Phase Plan 1 - Surfacing



- Notes**
1. Do not scale.
 2. Refer also to other contract drawings.
 3. Given the uncertain nature of the sub-formation allowance should be made for areas of 'soft spots'. Details of this construction can be found on Drawing Number E08-017A-007-00-006.
 4. Apparatus requiring OHD electrical services, removed under site clearance, are to be transferred by UKPN.
 5. Where new construction / overlay abuts existing construction the surface course and binder course are to join in 300mm steps.
 6. For details of all construction materials see Drawing Number E08-017A-007-00-006.
 7. Granite set channels to be laid 300mm wide, where necessary.

- Key**
- Reconstruct carriageway 500mm deep, to existing levels. Relay drainage channels utilising the granite sets (not channel blocks) removed under site clearance. For details see Drawing Number E08-017A-007-00-004 - approx 380m²
 - Overlay carriageway adjacent to southern channel (CHS), see Drawing number E08-017A-007-00-001 by 100mm and also to new channels levels along CHS, opposite - approx 910m², average depth approx 200mm.
 - Overlay carriageway with 120mm bituminous material (regulating, binder, surface course) - 310m²
 - Overlay carriageway with 100mm bituminous material (binder / surface courses) - approx 2120m²
 - Reconstruct carriageway 500mm deep, to be in with new adjacent overlay levels - approx 650m²
 - Overlay footway to suit new edging / kerb levels - approx 380m² @ 100mm average depth.
 - 40mm plate & inlay of carriageway surface course - approx 310m²
 - New footway construction, for details see Drawing Number E08-017A-007-00-006 - approx 60m²
 - Existing kerbs to remain.
 - Existing kerbs to remain, granite set channel (approx 60m) to be re-laid as part of the carriageway reconstruction / overlay.
 - Provide new H82 kerbs. Kerb levels to be raised by 100mm above the existing carriageway level. The first 15m (from the eastern end) to serve as transition between existing levels and new - approx 120m.
 - Provide new edging Type 6P250 with 120mm upstand (from existing carriageway level) - approx 70m.
 - Kerbs to be laid utilising re-used sandstone kerbs (removed under site clearance), where possible. If insufficient re-cycled kerbs are available then Marshalls Sustronor diamond wire steel Yorkstone kerbs are to be provided. Granite set channel to be re-laid as part of the carriageway reconstruction / overlay - approx 230m.
 - Provide new 255 x 120mm conservation kerbs to new levels - approx 115m.
 - Rear of footway to be raised to provide 140 uncastall towards the carriageway. New 6P 180 edging to be provided where necessary - approx 180m.
 - 1500 x 100 x 100mm treated timber posts, approx 800mm high at 1.5m centres to be provided along with a 300 x 300 x 300 concrete foundation, concrete mix S71. Posts to be installed 750mm back from the edge of carriageway - 75 No.



No.	Date	Description of Issue	Drawn	Checked	Issued	Approved
B	02/21	Kerb and notes amended, regarding granite sets.	NF	VV	NF	SJW
A	01/21	Footway overlay area amended.	NF	VV	NF	SJW

FOR TENDER



Essex Highways, Sales House, Victoria Road South, Chelstead, CM1 1QH. Tel: 0245 8237631 © Essex County Council

Carriageway and Footway Improvements St Johns Green, Colchester

General Arrangement

DATE	ISSUED	DATE	ISSUED	DATE	ISSUED
NF	NF	VV	NF	SJW	
Jun 20	Jun 20	Dec 20	Dec 20	Dec 20	

DIMENSIONS IN MILLIMETRES
LEVELS IN METRES

1:250

E08-017A-007-00-003

B