

# HIGHWAYS HIGHLIGHTS

INFORMATION FOR LOCAL COUNCILLORS | JULY 2023

11 OF 12 ADDITIONAL  
CREWS NOW DEPLOYED

# COMMENT

## COUNCILLOR LEE SCOTT

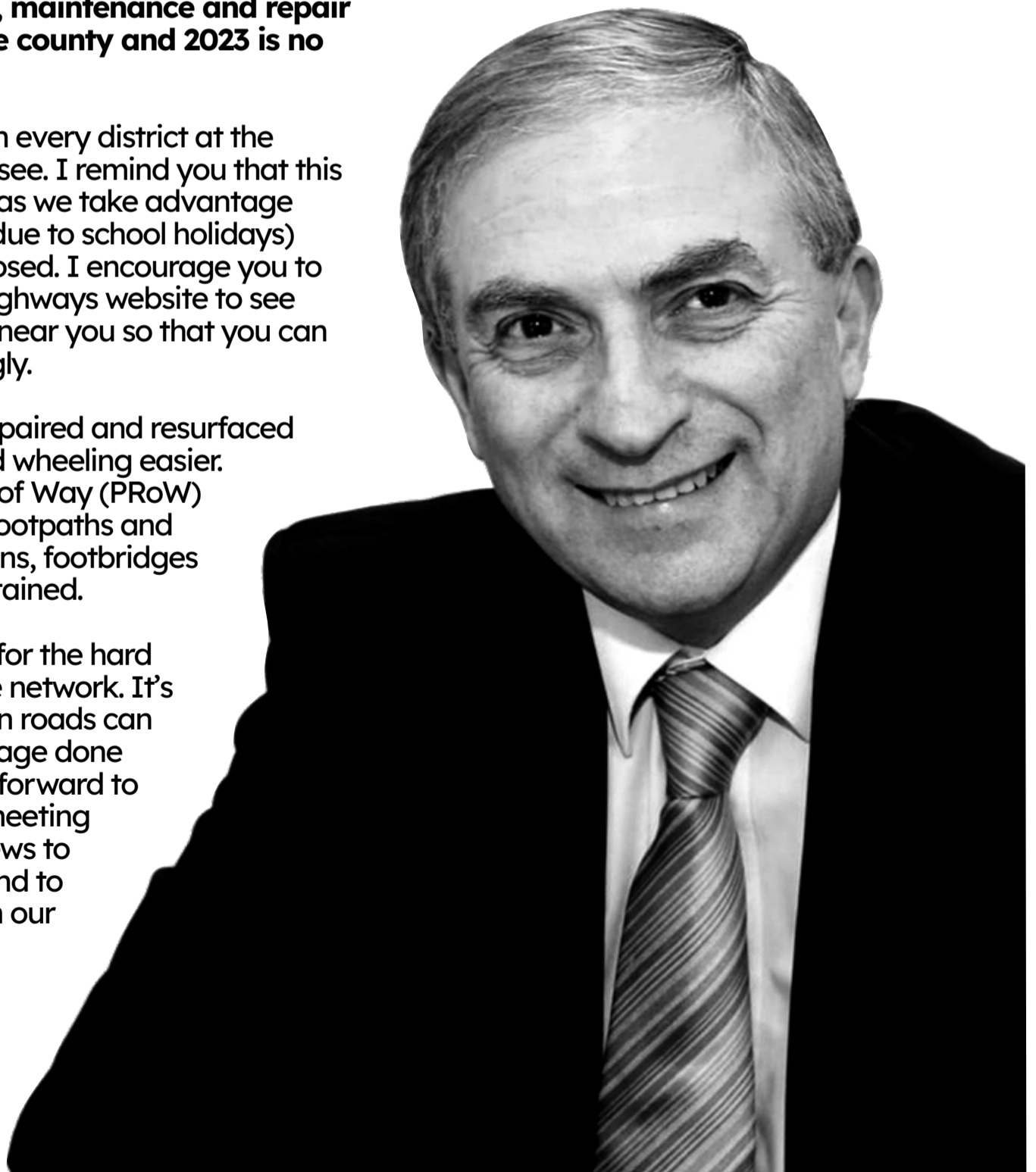
### CABINET MEMBER FOR HIGHWAYS MAINTENANCE AND SUSTAINABLE TRANSPORT

**This time of year sees our crews getting busier and busier as more resurfacing, maintenance and repair work takes place across the county and 2023 is no different.**

Resurfacing is taking place in every district at the moment which is exciting to see. I remind you that this level of activity (particularly as we take advantage of less traffic at peak times due to school holidays) means that roads may be closed. I encourage you to use the tools on the Essex Highways website to see where works are happening near you so that you can plan your journeys accordingly.

Pavements are also being repaired and resurfaced to make walking, cycling and wheeling easier. Elsewhere, the Public Rights of Way (PRoW) team is out on the county's footpaths and county trails making sure signs, footbridges and footpaths are well maintained.

As always, I'm very grateful for the hard work of the teams out on the network. It's an exciting time of year when roads can be resurfaced after the damage done during the winter and I look forward to getting out and about and meeting more of our hardworking crews to see how they're getting on and to thank them for all they do on our behalf.



# 11 OF 12 ADDITIONAL CREWS NOW DEPLOYED



**Back in May, a further £3 million was announced for Essex Highways to carry out more maintenance and repair work on roads across the county.**

This funding was in addition to our £35 million 2023/24 budget for maintaining and repairing the carriageway and to the £9 million additional investment announced in February.

This extra funding is targeted towards road surface repairs and treatments, which will address issues reported to Essex Highways and

ensure roads across the county are kept safe for residents and businesses.

We've used some of this funding to add additional crews to the Essex Highways team, which will help us keep pace with the volume of repairs required. 11 of these teams are already out and about working hard on the network and allowing us to repair more of the roads than we would have been able to without the additional investment.

# ROADWORKS DURING THE SCHOOL HOLIDAYS

Now that we are almost halfway through the summer holidays, you may have noticed an increased amount of roadworks taking place around the county.

During the school holidays, peak time traffic is less busy due to fewer commuters and changing travel patterns. This means it's a good opportunity for us to complete as many repairs as possible, particularly in traffic sensitive locations.

With more traffic management, such as temporary traffic lights, likely to be on the network, planning routes ahead of time means journeys will be less impacted by delays. Traffic management is vital in helping to keep highways workers and members of the public safe while works are being carried out.

We are committed to prioritising repairs to roads that have the most potential safety issues. When it comes to planning repairs and maintenance, the patience and co-operation

of the public helps works to be carried out smoothly and on time. Our staff are often subjected to abuse because of frustrations at repairs being carried out.

In many cases CCTV is in operation and operatives wear bodycams which enables the recording of any incidents. This helps to keep our staff and members of the public safe.

Cllr Lee Scott, Member for Sustainable Transport and Highways Maintenance, said: "The summer is a wonderful time to plan days out across Essex or go on holiday - this county has a lot to offer, from coastline to country parks and historic cities to working farms.

"I urge the people of Essex to make sure their plans aren't disrupted by encouraging them to check the roads before they travel, making sure journeys are less impacted by potential delays."

**Check where the latest works on the network are here**



**SAFER GREENER HEALTHIER**

Transforming travel in Essex



Rob (third from left) and members from the Essex Pedal Power community as well as Chris Boardman, head of Active Travel England, at the launch of the Clacton-Jaywick cycle route.

# ROB HAS KEY ROLE IN FIRST EVER ACTIVE TRAVEL ENGLAND WEBINAR

The first ever Active Travel England webinar took place earlier this month. The webinar was designed for local authority officers in transport, highways, communications and planning and ECC's Sustainable Transport team, who were thrilled that their very own Senior Transportation and Infrastructure Planner Rob Macdonald was asked to deliver it.

The challenges and approach to collecting data on cycle routes featured a spotlight on the Clacton to Jaywick upgraded cycle link which was completed recently. The improvements, which officially opened in April, included a new asphalt cycle track, stabilisation works, a new drainage system and 33 off-grid lighting columns (wind and solar-powered).

Rob's presentation featured the various challenges the team faced and their approach to collecting data including the first opportunity to obtain longer-term, continuous active mode data using a Viva City sensor, See.sense GPS trackers and survey analysis through the ECC insights team.

The works relate to the Clacton and Jaywick Essex Pedal Power pilot, a community-based cycling scheme which loans bikes to local residents with the aim of overcoming the barriers to active travel as a result of inequalities. If regular use is identified after 12 months, the individual is gifted the bike for free.

**More information about the Essex Pedal Power project can be found [here](#)**

# INNOVATION ON SHOW AT LCRIG FESTIVAL

**The second Local Council Roads Innovation Group's (LCRIG) Innovation Festival took place between 4-5 July at Newark Showground.**

The Innovation Festival is where products, solutions, new innovations and techniques are displayed and demonstrated over a range of live demonstration sessions. It provides local authorities with a chance to find out about new innovations from the supply chain that will help to meet their current and future challenges.

The festival is linked to the LCRIG Innovation Fund which encourages innovation by providing funding for innovation development and also matches innovators with local authorities looking to trial new products on their networks.

Essex Highways was represented by a delegation headed by Simon Butt, Operations Director, and David Forkin, Head of Maintenance and Operations.

The festival offers attendees an opportunity to network with other authorities and share ideas and best practice with a focus on how they work with their suppliers. The inside.outside format is effective in providing both lectures/thought leadership sessions with demonstrations of the latest developments/innovations in a range of vehicles and equipment.

Of particular current interest to Essex Highways is Mastic Asphalt – rubberised asphalt – that offers multiple benefits in that it can be applied hot, looks good, and could help the service focus beyond immediate issues and follow ups as it looks to innovative solutions, particularly in terms of preventative repair.

We are also looking at a Rejuvenation process that is applied between inlay surfacing treatments, increasing the length of time between Inlay surfacing treatments. It is lighter than surface dressing and has potential to realise reduced costs/reduced carbon.

Tactgrid is an innovation which speeds up the process of laying and repairing tactile paving and this too could have operational and cost benefits that the service is considering.

As Essex and other authorities seek to do more for less and work smarter, the LCRIG Innovation Festival has quickly become a fixture on the calendar. Simon said: “This has become a really useful event in that it brings together clients, suppliers and industry with a view to making real progress through the sharing of knowledge, skills, innovation and technology. It’s great to meet with like-minded people who all share the desire to provide the best service to their customers in the most cost-effective manner.”



# DEMO PUTS GULLY COVER REPAIRS IN THE FRAME



**Members of the Maintenance and Operations team received a demonstration by Instarmac Group plc and Wrekin on 17 July in Basildon.**

The two companies teamed up to show how Wrekin's ScrewLift frame levelling system along with Instarmac's Mortar Buoy, Envirobed and Enviromastic products can improve the process of gully frame installation.

ScrewLift is a rapid manhole frame levelling system and is suitable for use with nearly all of our D400 and E600 manhole covers and gully grates. The frame is placed into position and leveling bolts are screwed into each bush from the top.

Then, using a spirit level or straight edge on top of the frame, the bolts are wound down to achieve the correct level to the surrounding

road surface. ScrewLift is very straight forward to use and can be installed with any bedding mortar.

Instarmac's Mortar Buoy is an inflatable device that acts as a dam allowing a flowable mortar installation within seconds. The Mortar Buoy inflatable dam prevents any mortar seeping into the access chamber and helps provide a seamless finish to the chamber. This allows a single pour installation of Envirobed, an environmentally friendly alternative to resin, which encapsulates the flange of the access frame creating a solid bed and backfill in one.

The demonstration received great feedback from those of our Supervisors and Operatives who attended and the products and methods shown are now being evaluated by the service.

# ROUTINE REPAIRS: JUNE 2023



COUNTY ROUTES  
**784**



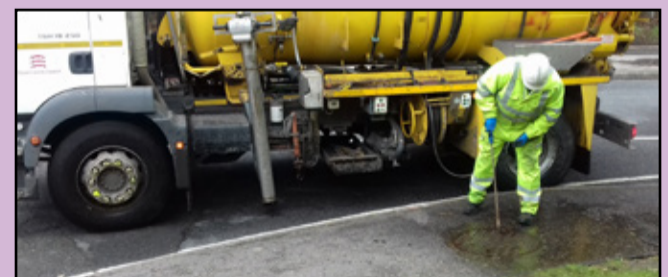
LOCAL ROADS  
**310**



PAVEMENTS  
**299**



DRAINS CLEARED  
**11,517**



STREETLIGHTS  
**2,234**

